

PART OF S.E. 1/4 OF N.E. 1/4  
SECTION 20, T.6N., R.1W., S.L.B. & M.

IN OGDEN CITY  
SCALE 1" = 50'

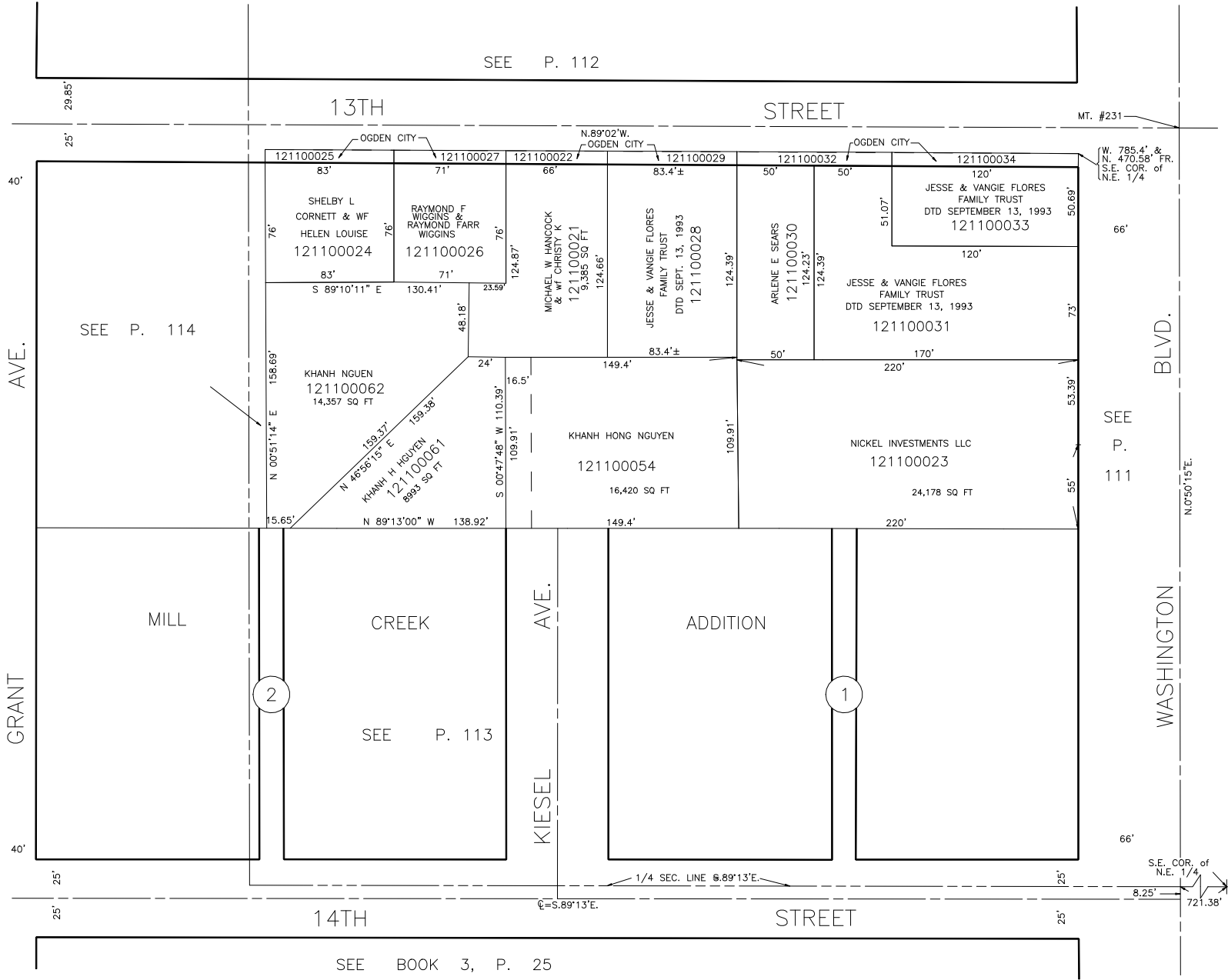
TAXING UNIT: 25

SEE P. 112

13TH

STREET

MT. #231



GRANT AVE.

WASHINGTON BLVD.

KIESEL AVE.

MILL

CREEK

ADDITION

2

1

SEE P. 113

SEE P. 111

14TH

STREET

SEE BOOK 3, P. 25

S.E. COR. of N.E. 1/4  
8.25' 721.38'